

Orthoboom[®] SPRING
SUMMER **2026**



Shoes with superpowers!



A LITTLE ABOUT OUR HISTORY

The brand's story began more than 25 years ago, when a team of Russian and German specialists in healthy footwear — “barefoot shoes” — started developing fashionable, stylish, and comfortable shoes for children.

We began by creating shoes for children in need of special care and support to make their lives steadier and brighter.

We took part in more than 50 international research projects in Berlin, Moscow, St. Petersburg, and Nizhny Novgorod. We studied how shoe design affects a child's healthy development.

This way, the modern production of truly healthy children's footwear for every child was established.

Today, our specialists are technologists, designers, and craftsmen who trained and interned in Italy, Spain, and Portugal.

Orthoboom®

We are proud of our shoes!





LETTER TO THE CUSTOMER

Dear friends!

We are delighted to present our new Orthoboom SS'26 orthopedic footwear spring-summer collection, inspired by the theme: **“The Game of Professions. Footwear as a first choice.”**

The Spring-Summer 2026 collection embodies children’s dreams, where professions are not rigid terms but living images. Here, the Dew Collector meets the Shadow Engineer, and the Rhythm Geodesigner walks beside the Architect of Lightning.

Every model is not just a pair of shoes. It is a first choice: comfortable, stylish, and technologically advanced. We design our products in compliance with all GOST requirements and using the latest innovations in children’s orthopedic footwear. We strive to support children’s health and comfort so that every step is light, safe, and confident.

Orthoboom is not just footwear. It is a form of self-expression and reliable support. It is easy to play, build, imagine, and be yourself in it — and at the same time dream about the future, where a profession begins with imagination and the path with comfort.

**Orthoboom SS'26 — a collection where play leads to dreams,
and every step leads to the future.**



ORTHOBOOM PRODUCTION

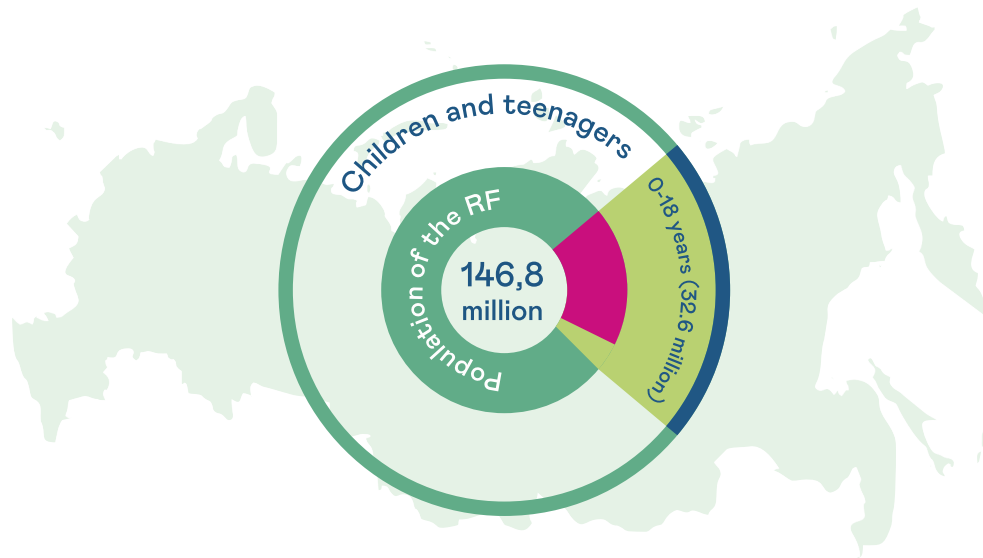
ORTHOBOOM is a certified manufacturer of children's footwear. We control product quality at every stage of production.

- Orthopedic footwear is manufactured in accordance with Russian GOST standards.
- Roszdravnadzor registration certificate dated 18.02.2020 No. RZN 2019/8136.
- Our production has been certified according to GOST R ISO 9001-2015 (quality control at all stages of the technological cycle).
- European CE quality certificate.
- Headquarters in Berlin, Germany. Partners: design bureau in Milan, Italy.
- Production facilities: Germany, Italy, Portugal, China, Korea, Russia.





FLAT FEET IN CHILDREN AND ORTHOBOOM SHOES



Flat feet are observed in **78%** of children and teenagers in Russia.

More than **27,000,000** children need Orthoboom children's orthopedic footwear (according to data from the Federal State Statistics Service and the World Health Organization, WHO, for 2018).

According to Roszdrav statistics:

- by age 4, **32%** of children show early signs of flat feet,
- by age 6, **40%**,
- by age 12, **50%** (every second teenager has a diagnosis of flat feet),
- by age 20, **60%**.

In Russia, more than
100 million pairs
of children's shoes
are sold every year.



ORTHOBOOM — RESEARCH

Orthoboom orthopedic footwear was tested at the Scientific and Practical Center for Children's Psychoneurology of the Moscow Healthcare Department, the Federal Scientific Center for Rehabilitation of Disabled People named after G.A. Albrecht, and the Pediatric Research Institute of Privolzhsky Research Medical University.

According to the results, in children with flat feet who wear the shoes for 1 year while walking:

3 TIMES

reduction in pelvic tilt deviation,

2 TIMES

reduction in shoulder tilt angle,

2 TIMES

increase in walking speed,

20%

less knee joint movement amplitude,

30%

stronger push-off function of the foot,

35%

more stable balance and nearly 2 times improvement in gait stability.



ORTHOBOOM — THESE ARE INNOVATIONS

We were the first to introduce the concept of proper children's footwear, which has now become familiar.

For the first time in Russia, we developed innovative orthopedic footwear, comfortable and anatomically shaped, creating conditions for the healthy development of all children..

We patented our anatomical last with a removable insole.

We designed a special removable DeepStepEx support insole with arch support and heel pad.

We introduced shock-absorbing elements into orthopedic models, eliminating chafing.

We developed the elastic and flexible lightweight FlexStep outsole with a Thomas reverse heel and rocker in the forefoot area.





REMOVABLE SUPPORT INSOLE

DeepStepEx

The innovative soft-action DeepStepEx insole promotes the natural healthy development of the foot.

- The heel recess follows the correct anatomical shape of the foot.
- Supports the outer and inner arches of the foot.
- Prevents the formation of:
 - longitudinal flat feet,
 - lateral (valgus or varus) deviation of the rearfoot.
- The heel shock absorber reliably protects the child's heel from impact loads.
- Recommended for the prevention and treatment of orthopedic pathology in children in 99% of cases.

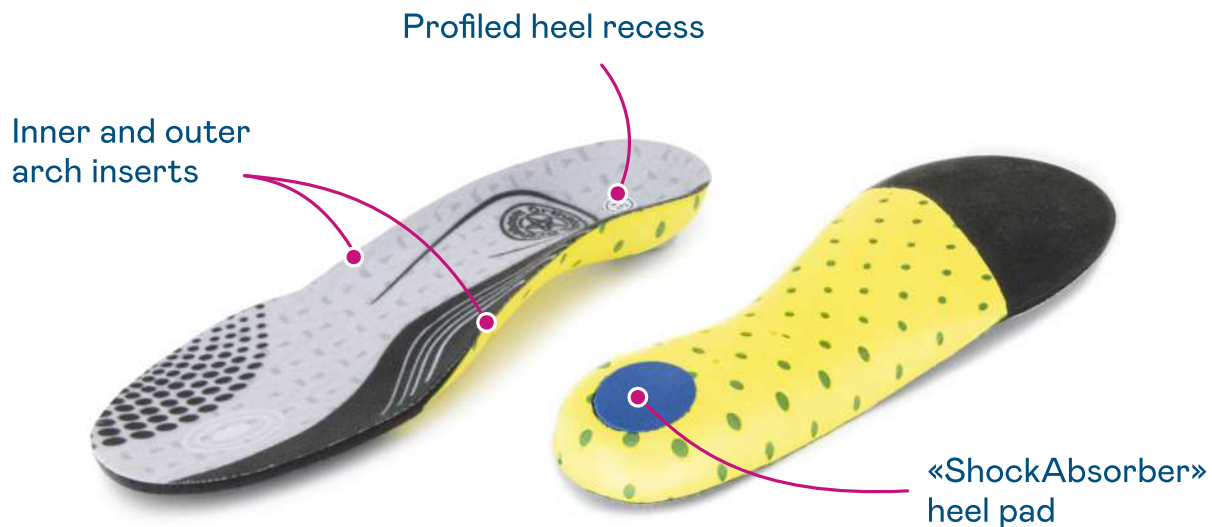




PROFILED SUPPORT INSOLE

For all sports footwear models this season, we use an **innovative profiled support insole**.

- Consists of several layers of foamed material with different densities and rigidity, allowing optimal distribution of the sole's properties by zones.
- Inserts for the inner and outer arches and the profiled heel bed promote proper heel positioning and help prevent longitudinal flat feet and rearfoot valgus alignment.
- The ShockAbsorber heel pad reliably protects the child's heel from impact loads.
- The top layer of the insole is made of a lightweight, washable, abrasion-resistant textile material.

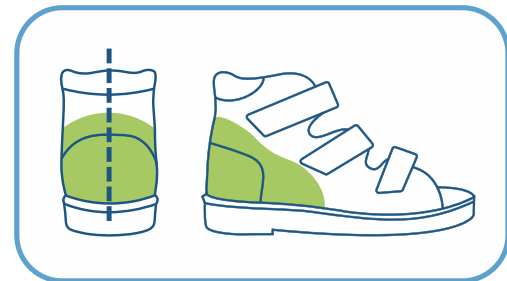




RIGID HEEL COUNTER

PreVent

- Stabilizes and fixes the foot in the correct position.
- Has an extended wing to eliminate ankle joint instability.
- Improves foot rollover mechanics.
- Prevents further deformation of the foot.
- Promotes proper development of the joint surfaces.





PREVENTIVE ORTHOPEDIC FOOTWEAR



Preventive footwear is footwear whose design is developed taking into account the prevention of pathological deviations in the foot. The support orthopedic insole helps correctly form the arches of the foot. The rigid forefoot section prevents the formation of transverse flat feet and lateral deviation of the forefoot. The rigid heel counter promotes the physiological positioning of the heel bone.

Indications for use:

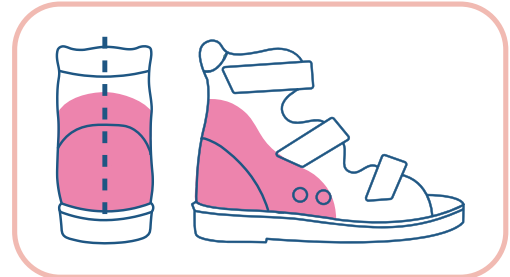
- Early manifestations of flat feet (slight lowering of the arches, valgus positioning of the feet, functional insufficiency).
- Grade 1–2 flat feet (flexible).
- Splay forefoot grade 1–2 (flexible).
- Rehabilitation after injuries and operations on the foot and ankle joint.
- For prevention of foot pathology development in children.



RIGID SHAFT

Pr+

- Made on an orthopedic last with an anatomical profile.
- Close fit to the child's foot due to the shaped heel counter with reinforced effect on the outer and inner sides.
- A double-sided shaft with extended wings securely fixes the subtalar and ankle joints, providing a therapeutic effect.
- Ensures correct positioning of the heel bone relative to the shin.
- Corrects deformation of the joint surfaces.
- Prevents further deformation.





ORTHOPEDIC FOOTWEAR

WITH A RIGID SHAFT

Orthopedic footwear with a rigid shaft is footwear designed with pathological changes in the foot, lower leg, or hip in mind.

Correction, compensation, and fixation of a deformed foot in children's orthopedic footwear are achieved through the inclusion of special orthopedic parts. This may include rigid, soft, or metallic components, intersole layers, specially constructed bottom parts, and other special details. Orthopedic footwear for children may have no fewer than two special orthopedic parts.

A rigid shaft excludes the formation of valgus or varus heel positioning. A rigid outsole with a support insole promotes the correct formation of the arch of the foot. A rigid forefoot section with a large opening makes it easier to put the shoes on and improves hygienic care. For children with already formed valgus or varus foot deformity, footwear with a high rigid shaft is recommended. The high rigid shaft fixes not only the subtalar-heel but also the ankle joint, which with constant wear promotes proper development of joint surfaces and prevents further deformation. The use of a support orthopedic insole allows correct arch formation. Hook-and-loop fasteners ensure reliable fixation for feet of different fullness and make the shoes easier to use.



ORTHOPEDIC FOOTWEAR

WITH A RIGID SHAFT

The Thomas heel, extended on the inner side of orthopedic footwear, helps eliminate the inversion component (rotation of the foot inward) and distributes the load on the foot while walking due to the extended inner section, preventing the foot from rotating inward. All this promotes proper load distribution on the foot, creates the most comfortable walking conditions, and helps prevent (correct) foot deformity.

Indications for use:

- Plano-valgus foot deformity.
- Equinus and equino-varus foot deformity.
- Hanging foot.
- Clubfoot.
- Hollow foot.
- Consequences of cerebral palsy.
- Paresis or paralysis of the lower limbs of various origin.
- Friedreich's disease (cavovarus foot), spinal muscular atrophy (Charcot-Marie disease), and X- or O-shaped deformity of the lower limbs.





ORTHOPEDIC OUTSOLE

WITH A THOMAS REVERSE HEEL

Outsole:

- Elastic and flexible.
- Resilient, durable, cushioning, non-slip.
- With rocker in the forefoot area.

Thomas reverse heel:

- Prevention or treatment of inward collapsing feet (development of valgus-foot deformity).
- Helps proper gait formation.
- Makes the child's foot more stable on the surface.
- Provides comfort while walking.
- Properly distributes the load on the foot.





HOME DIAGNOSTIC SYSTEM

8ZTest

Segments where sole wear is noticed:

The ribbed surface and division into control wear zones on the outsole of Orthoboom shoes help detect uneven distribution of the load on the foot.

1 Risk of developing flat feet.

Pronounced pathology: flat feet, plano-valgus foot deformity, X-shaped knee deformity, valgus deformity of the big toes (outward deviation of the foot during stance: the arch of the foot drops inward and downward). Consultation with an orthopedist is required.

2
3
4

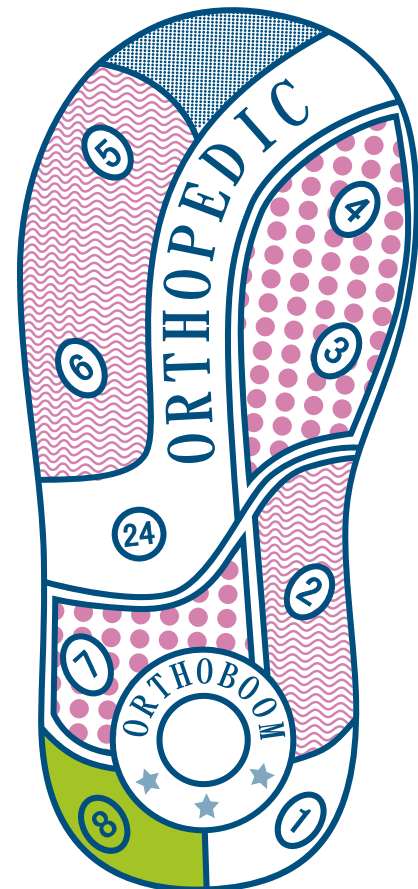
4 Possible mild cerebral palsy. Consultation with a neurologist is required.

5

5 Pronounced pathology: equino-varus deformity of the feet, clubfoot, O-shaped knee deformity, clubfoot, etc.
6 Consultation with a doctor is required.

7

8 Normal — the child's feet are healthy, no pathology detected. Orthopedic footwear serves preventive purposes.





ULTRA-LIGHT EVA OUTSOLE

BaseCloud

The EVA outsole makes sneakers incredibly light — feet get less tired even after a long walk or run. Excellent cushioning softens every step and protects the joints.

Flexible and moisture-resistant material ensures comfort in any weather, while EVA durability provides a long service life without loss of shape or convenience.

Advantages of an EVA outsole:

- Lightness.
- High wear resistance.
- Resilience and elasticity.
- Good cushioning.
- Hypoallergenic.





SOFT COLLAR



- The soft collar softens contact between the lower leg and the edge of the shoe while moving, preventing rubbing and callus formation.
- Ensures a snug yet comfortable fit of the upper to the foot, improves the flexibility of the shoe edge, and extends the service life.





VELCRO FASTENERS (sliders, buckles, laces)

- Allow the foot to be fixed firmly and securely in the shoe.
- A wide opening makes the shoe easier to put on.





QUICK LACING SYSTEM

- The system allows shoes to be laced quickly and effortlessly with one movement.
- Thanks to the locking disc, it does not loosen during use. Micro-adjustment allows fine-tuning the tension for maximum comfort while wearing.



OPEN

pull the ring,
pull the shoe
edge



CLOSE

press the ring,
pull to the right



NATURAL MATERIALS

- Made from natural leather or nubuck.
- With a high-quality lining made of natural materials, allowing the foot to breathe and preventing irritation.
- Breathable.





DENSE AND WIDE TOE CAP

- In all footwear with a closed toe section.
- Protects the foot while walking.
- Helps comfortable and spacious placement of the toes and their free movement.
- Increases footwear durability.





WIDE OPENING LOWOPEN

A wide opening and easy putting-on are achieved thanks to:

- the unique LowOpen quarter construction,
- the use of various combinations of ORTHOBOOM fasteners.



ORTHOBOOM SUMMER COLLECTION



SUMMER
PREVENTIVE
MODELS

Flyza

25057-04

Butterfly catcher

Catch wings, leave a trace



genuine leather



leather lining



royal pink
19-37

SUMMER
PREVENTIVE
MODELS

Dewin

27057-13

Dew collector

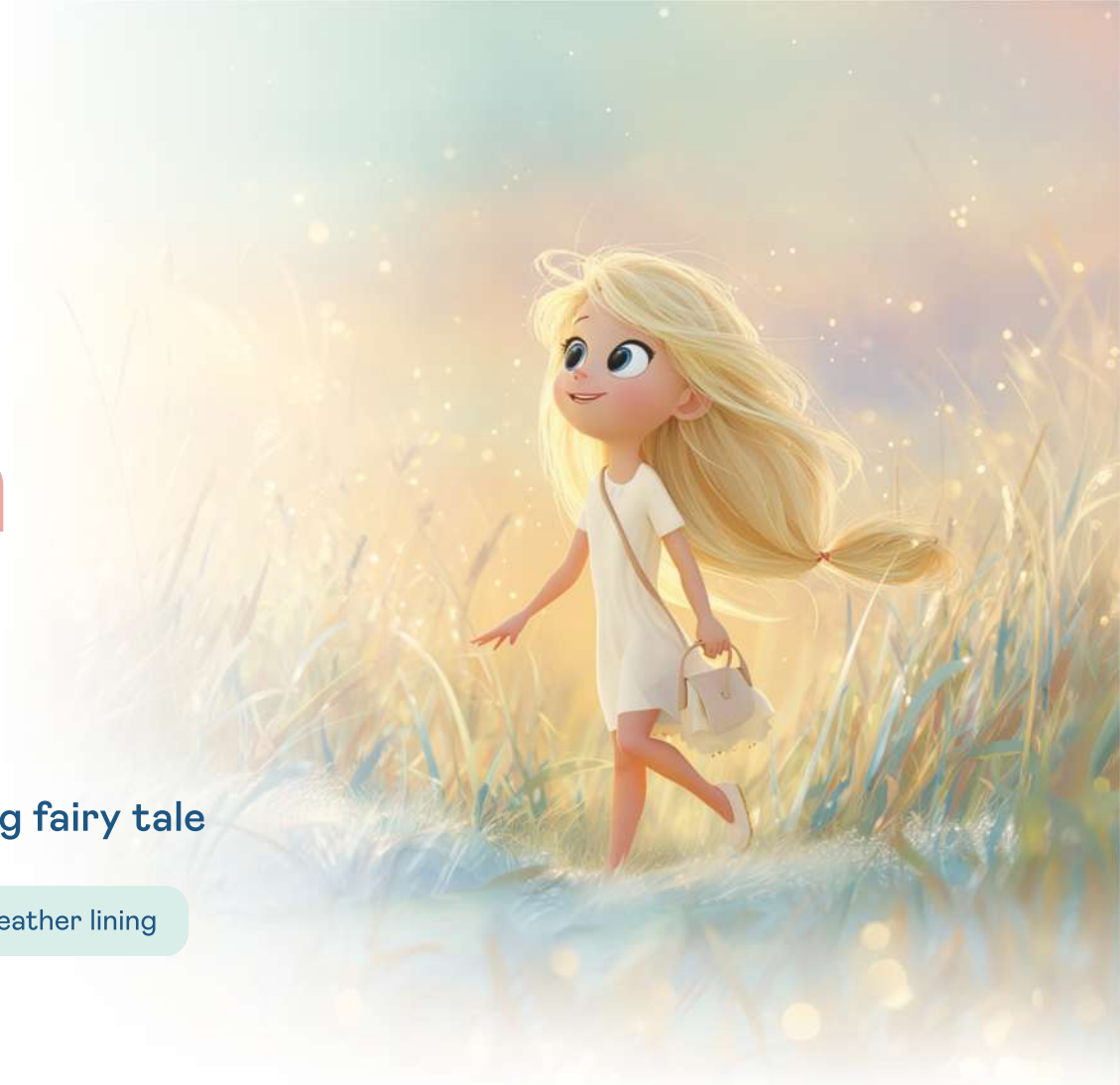
Walk as if in a morning fairy tale



genuine leather



leather lining



crystal white
19-37



beige powder
19-37



shimmering pink
19-37

SUMMER
PREVENTIVE
MODELS

Modrix

27057-14

Sports engineer

Your formula for comfort in motion



genuine leather



leather lining



lead white with blue
19-40



road gray
19-40

SUMMER
PREVENTIVE
MODELS

Pathorn

43287-6

Trail archivist

Don't look for a route. Create one.



genuine leather



leather lining



tropical green
19-37



SUMMER
PREVENTIVE
MODELS

Gravix

25057-07

Gravity specialist

Holds trajectory even on turns.



genuine leather



leather lining



steel blue
19-37

SUMMER
PREVENTIVE
MODELS

Florix

27323-04

Sound-flower composer

Listen to the music of flowers



genuine leather



leather lining



port blue
23-35



milky crystal
23-35

SUMMER
ORTHOPEDIC
MODELS

Stabello

71057-11

Step coordinator

Every movement is confidence



genuine leather



leather lining



electric sapphire
23-37



lilac pink
23-37

SUMMER
ORTHOPEDIC
MODELS

StabiliQ

71057-01

Stability curator

When comfort becomes the starting point



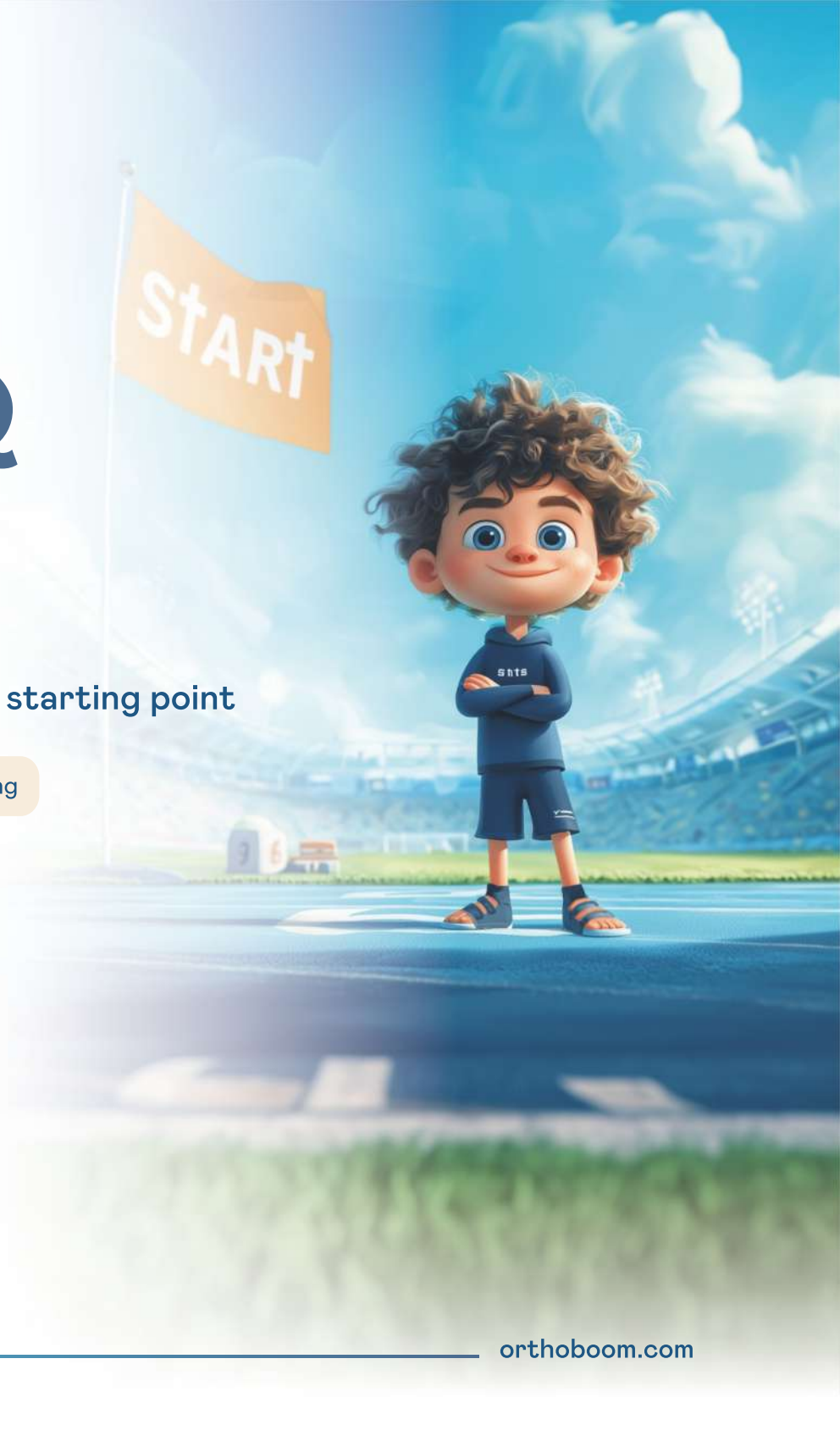
genuine leather



leather lining



dark blue with caramel
19-40



SUMMER
ORTHOPEDIC
MODELS

Chirpy

71057-01

Bird language translator

Speak to birds in their language



genuine leather



leather lining



creamy pearl
23-37



SUMMER
ORTHOPEDIC
MODELS

Axiona

81057-02

Axis keeper

Confidence begins with support



genuine leather



leather lining



norwegian blue
23-40



dusty pink with pearl
23-40





ORTHOBOOM AIR COLLECTION



ORTHOBOOM AIR ADVANTAGES

- **COMFORTABLE** — we create shoes where distance does not matter
- **WITH ORTHOPEDIC ELEMENTS** — we care for children's foot health
- **BREATHABLE** — natural materials
- **LIGHTWEIGHT** — we introduce new technologies
- **FROM ECO MATERIALS** — we care for the environment
- **STYLISH** — we follow the latest fashion trends
- **SAFE** — we test the outsole on mountain trails and wet tiles
- **IDEAL FOR SPORTS AND ACTIVE LIFE**





ORTHOBOOM AIR ADVANTAGES



SUMMER
PREVENTIVE MODELS /
ORTHOBOOM AIR

Auraline

37037-01

Muse of weightless forms

Where softness becomes style



textile



textile



blackberry
29-35



persian pink
29-35



coconut white
29-35

SUMMER
PREVENTIVE MODELS /
ORTHOBOOM AIR

Auraline

37037-01

Muse of weightless forms

Where softness becomes style



textile



textile



lavender velvet
29-35



tiffany
29-35

SUMMER
PREVENTIVE MODELS /
ORTHOBOOM AIR

Aerix

37037-01

Air-current explorer
Lightness is your speed



textile



textile



azure breeze
29-35



mineral gray
29-35



black fern
29-35

SUMMER
PREVENTIVE MODELS /
ORTHOBOOM AIR

Labrix

33037-01

Cartographer of labyrinths

The labyrinth map lies beneath the outsole



textile / artificial leather



textile



gray-blue with beige
29-40



olive with sand
29-40



forest nut
29-40

SUMMER
PREVENTIVE MODELS /
ORTHOBOOM AIR

Zappo

35054-02

Architect of lightning

Set lightning free in every step



textile / artificial leather



textile



storm gray
29-35



turquoise impulse
29-35

SUMMER
PREVENTIVE MODELS /
ORTHOBOOM AIR

Tracko

33054-04

Pilot of ground tracks

Every street is a runway



textile / artificial leather



textile



smoky indigo
29-39



graphite moss
29-39

SUMMER
PREVENTIVE MODELS /
ORTHOBOOM AIR

Rhythm

33037-01

Rhythm geodesigner

Tune rhythm into every step



textile / artificial leather



textile



caramel sand
24-35



gray fog
24-35

SUMMER
PREVENTIVE MODELS /
ORTHOBOOM AIR

Layrix

33037-01

Explorer of layers and textures

Read space through structures



textile / artificial leather



textile



blue reef
24-35



green moss
24-35

SUMMER
PREVENTIVE MODELS /
ORTHOBOOM AIR

Voltika

37054-03

Light-route operator

Every movement is a flash of character



textile / artificial leather



textile



orange fresh
31-38



tropical storm
31-38



ice bubblegum
31-38

SUMMER
PREVENTIVE MODELS /
ORTHOBOOM AIR

Aeronix

35034-01

Acceleration engineer

Ready to dash at any moment



textile / artificial leather



textile



blue tornado
31-38



white-blue with tangerine
31-38

SUMMER
PREVENTIVE MODELS /
ORTHOBOOM AIR

Relium

30247-17

Curator of relief worlds

Build your route through micro-relief



textile / artificial leather



textile



matte anthracite
36-45



white-gray with indigo
36-45



ORTHOBOOM SPRING COLLECTION

SPRING
PREVENTIVE
MODELS

Scriptor

97057-05

Curator of knowledge

Your support in the world of ideas



genuine leather



leather lining



graphite black
31-37



SPRING
PREVENTIVE
MODELS

Terrix

31057-01

Landscape step designer

Design a route through the reliefs of childhood




genuine leather




leather lining



 sea blue
27-38



 gray-pink powder
27-38

SPRING
PREVENTIVE
MODELS

Auriant

87037-01

Collector of winds

Freedom of breath in every step



genuine leather



fleece



graphite stone
26-35



dusty rose
26-32

SPRING
PREVENTIVE
MODELS

Shadrik

80123-01

Shadow engineer

A map of streets is hidden beneath the outsole



genuine leather



fleece



black bark
29-35

SPRING
PREVENTIVE
MODELS

Trakrum

81145-14

Route encryptor

Every step holds the secret of the way



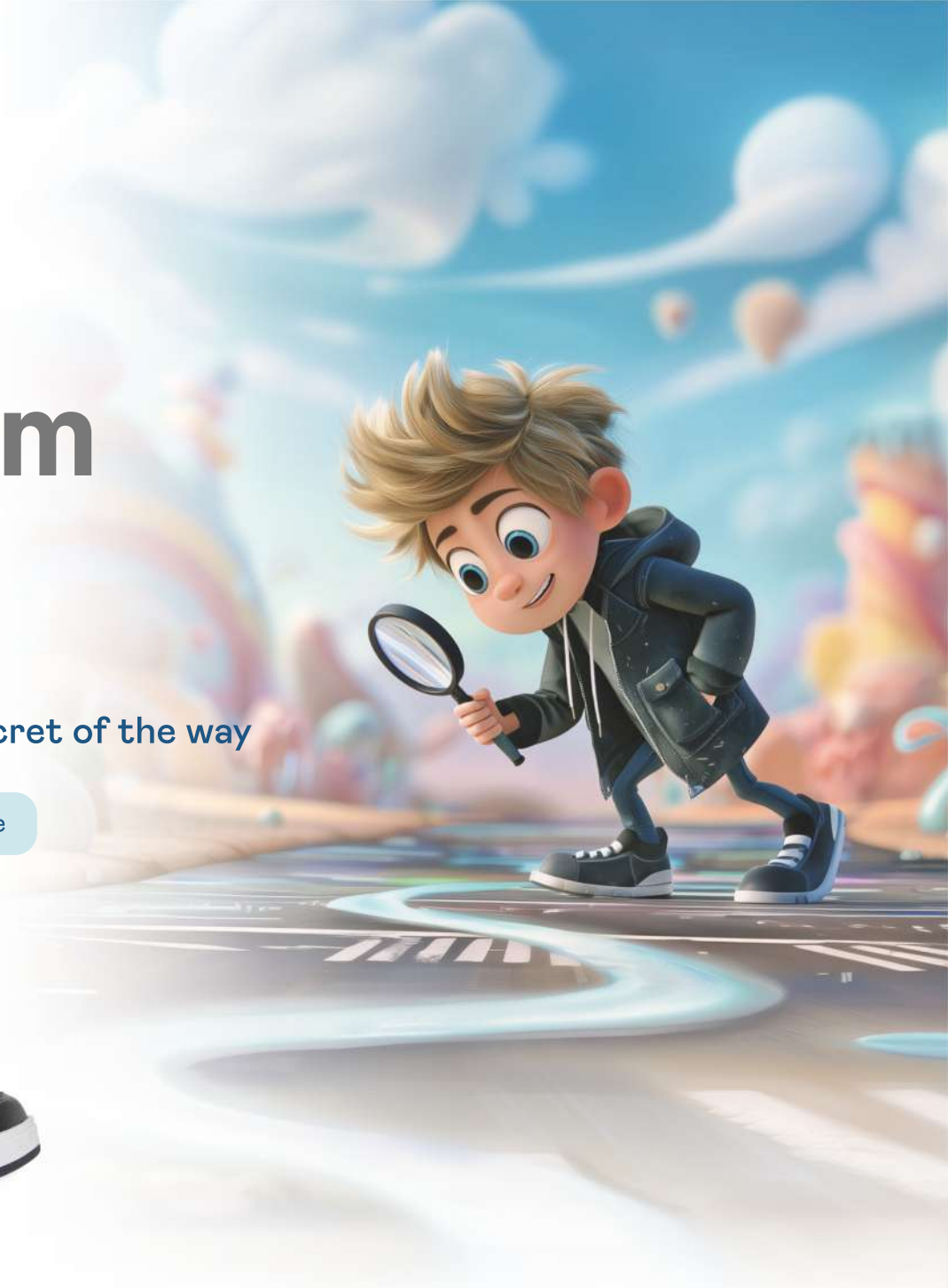
genuine leather



fleece



mint graphite
26-40



Orthoboom[®] Proper footwear
for adults and children





Orthoboom GmbH

Bessemerstrasse 51, 12103 Berlin, Germany

support@orthoboom.de

orthoboom.com

